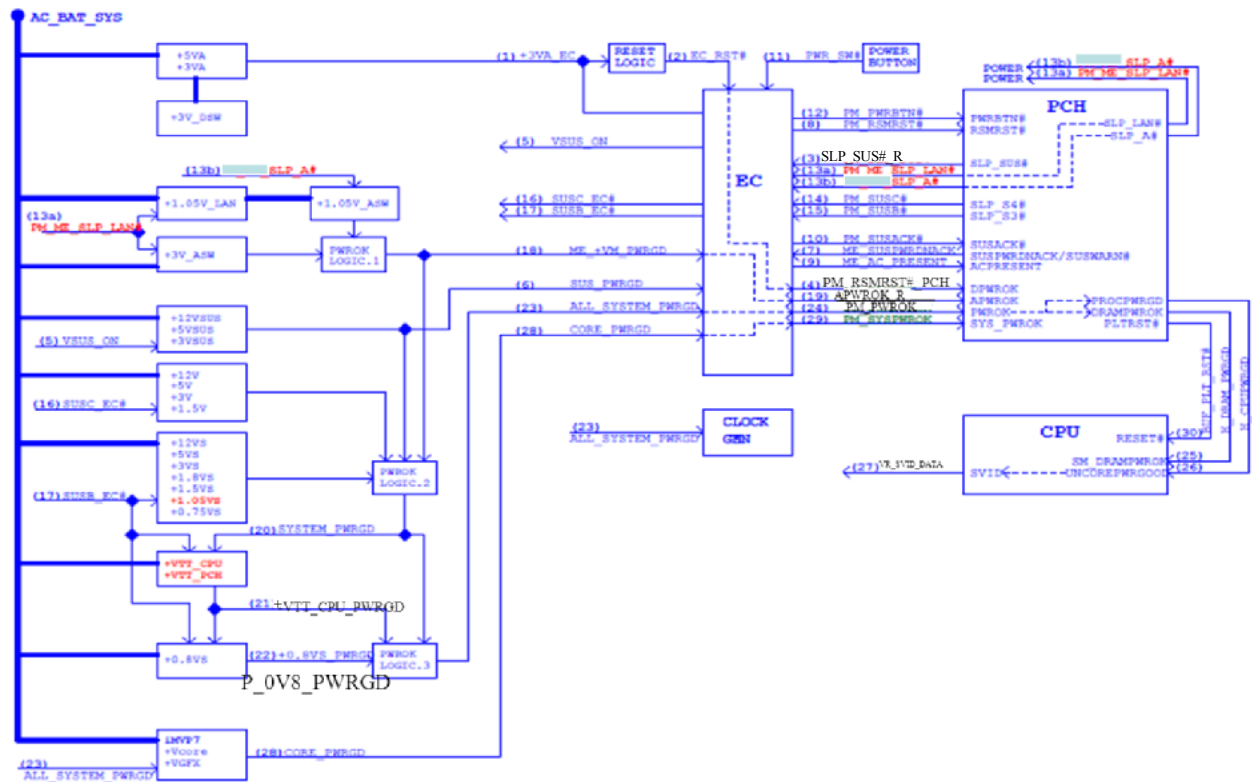


G74SX Repair Guide

2011/5/9
Janmou_chang
CSC-GRMA

AC-IN Mode

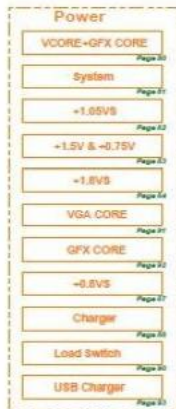
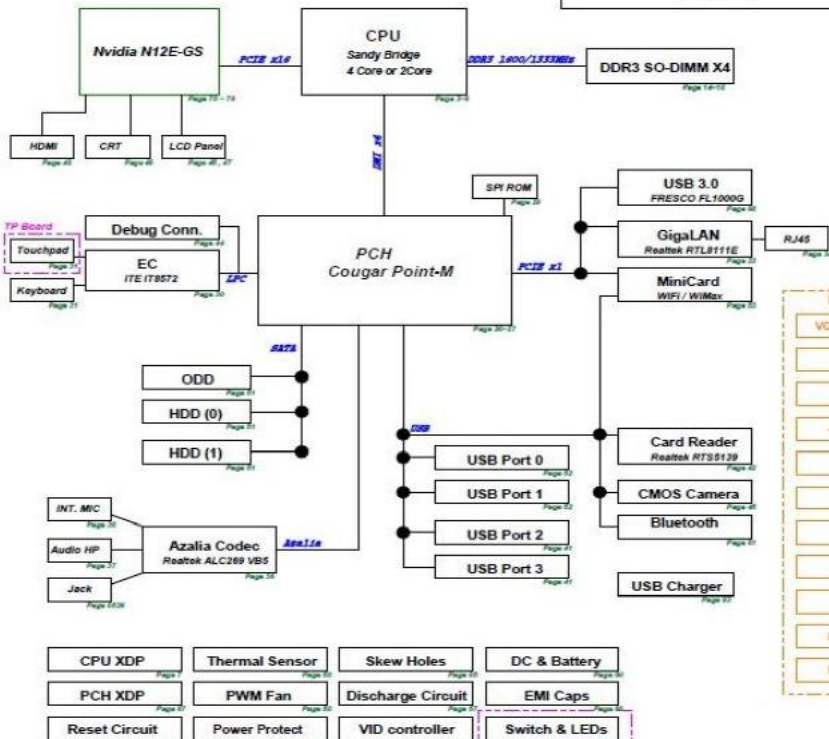


G74SX Repair Guide

2011/5/9
Janmouss_chang
CSC-GRMA

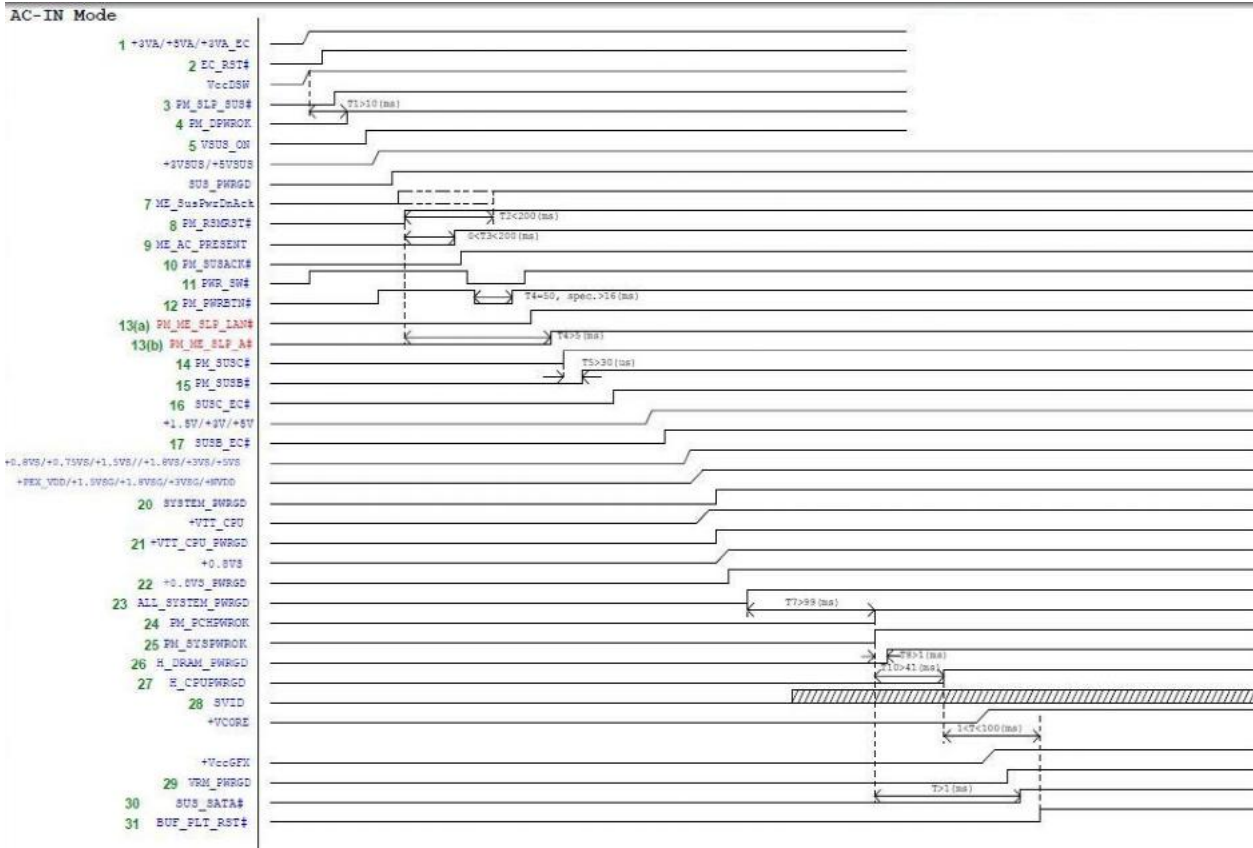
01. Block Diagram
02. System Setting
03. CPU_DMI/PEG/FDLCLK/MISC
04. CPU_DDR3
05. CPU_CFG.RSV0_GND
06. CPU_PWR
07. CPU_XDP
14. DIMM DDR3 SO-DIMM A(T)
15. DIMM DDR3 SO-DIMM B(T)
16. DIMM DDR3 SO-DIMM A(B)
17. DIMM DDR3 SO-DIMM B(B)
18. DIMM CA-DO Voltage
20. PCH-CPT SATA, HDA, RTC, LPC
21. PCH-CPT PCIE CLK, SMB, PEG
22. PCH-CPT FDL DMI, SYS PWR
23. PCH-CPT DP, LVDS, CRT
24. PCH-CPT CPU/MURAM USB
25. PCH-CPT CPU/GPIOMISC
26. PCH-CPT PWR_GND
27. PCH-CPT PWR_GND
28. PCH-CPT SPI ROM, OTH
30. KBC, IT8572
31. KBC, KB & TP
32. RST, Reset Circuit
33. LAN, RTL8111E
34. LAN, RJ45 Conn.
38. AUD, ALC269Q-GR
39. AUD-HEADPHONE & SPEAKER
39. AUD-MIC-IN
39. AUD_IO_CONN
40. USB IO_CONN
42. CR_RTSS139
44. Debug Port
45. LVDS, 20 Panel & Camera
48. CRT, D-Sub
49. EDP 30 PANEL & Emitter
48. HDMI
50. FAN, Fan & Sensor
51. HDD & ODD & HDD IO
52. USB External PORT
53. WLAN
57. DSG, Discharge
58. PW, PROTECT & GPU power
60. DC DC & BAT IN
61. BT, Bluetooth
62. PW board
65. ME, Conn & Skew Hole
68. USB 3.0 Fresco, FL1000G
69. PCH_XDP, ONFI
70. GPU PCI IF (A)
71. GPU_FB (B/C/D)
72. VcoreFB cap (FGHJ)
73. FBA
74. FBB
75. FBC
76. Vcore Cap
77. LVDS & HDMI (KNPQ)
78. CRT&EDP (LMO)
79. CLOCK&Strap&GPIO (RST)
80. PW, Vcore(SL8531)
81. PW_SYSTEM(RT8206A)
82. PW_IO_VCCP(RT8202A)
83. PW_IO_VCCP(RT8202A+UP77113)
84. PW+1.5V(RT8015)
87. PW+0.8V(RT8015)
88. PW CHARGER(MB38A132)
89. 3D PANEL_VS(RT8253)
91. GPU POWER: NVDDQ (NCP3218)
92. GPU POWER: FSVDDQ (RT8202)
93. USB CHARGER
94. POWER FLOWCHART
96. POWER-ON SEQUENCE
97. POWER-ON TIMING: AC MODE
98. POWER-ON TIMING: DC MODE

G74Sx Block Diagram



G74SX Repair Guide

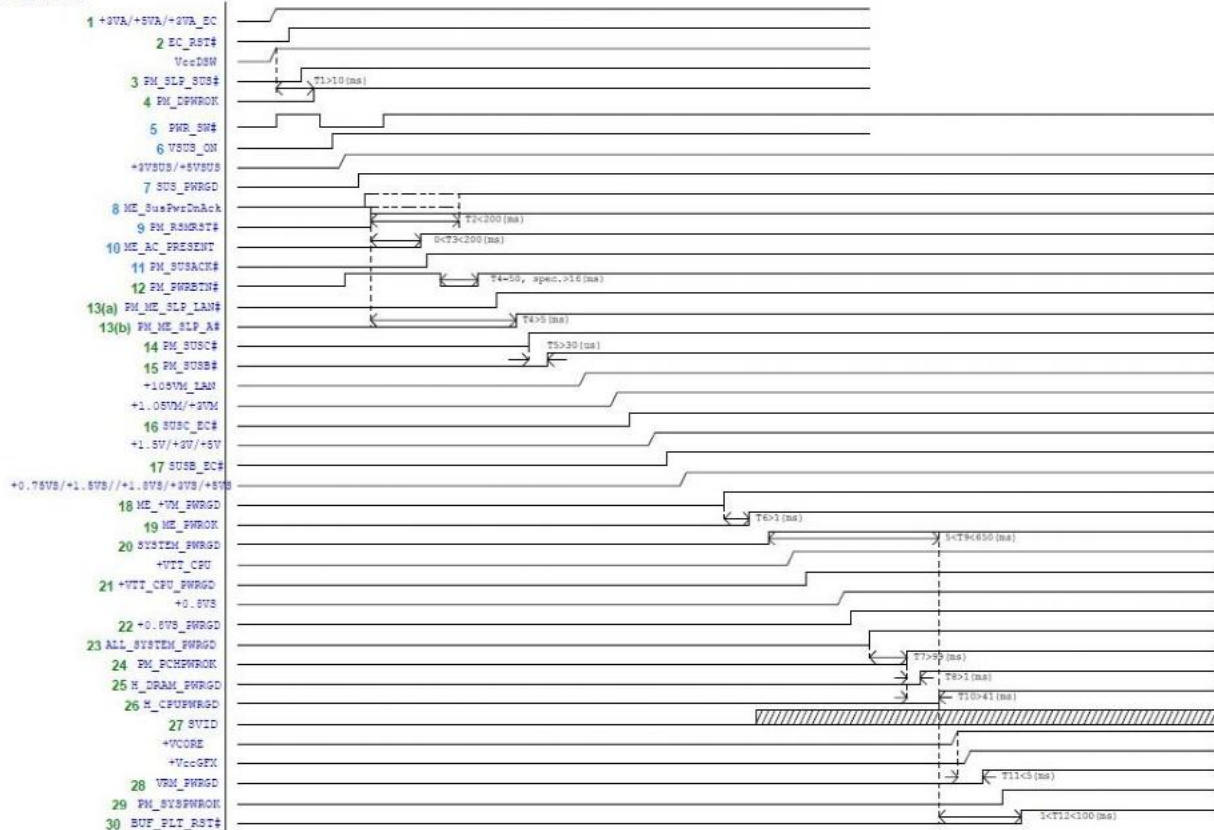
2011/5/9
Janmou_chang
CSC-GRMA



G74SX Repair Guide

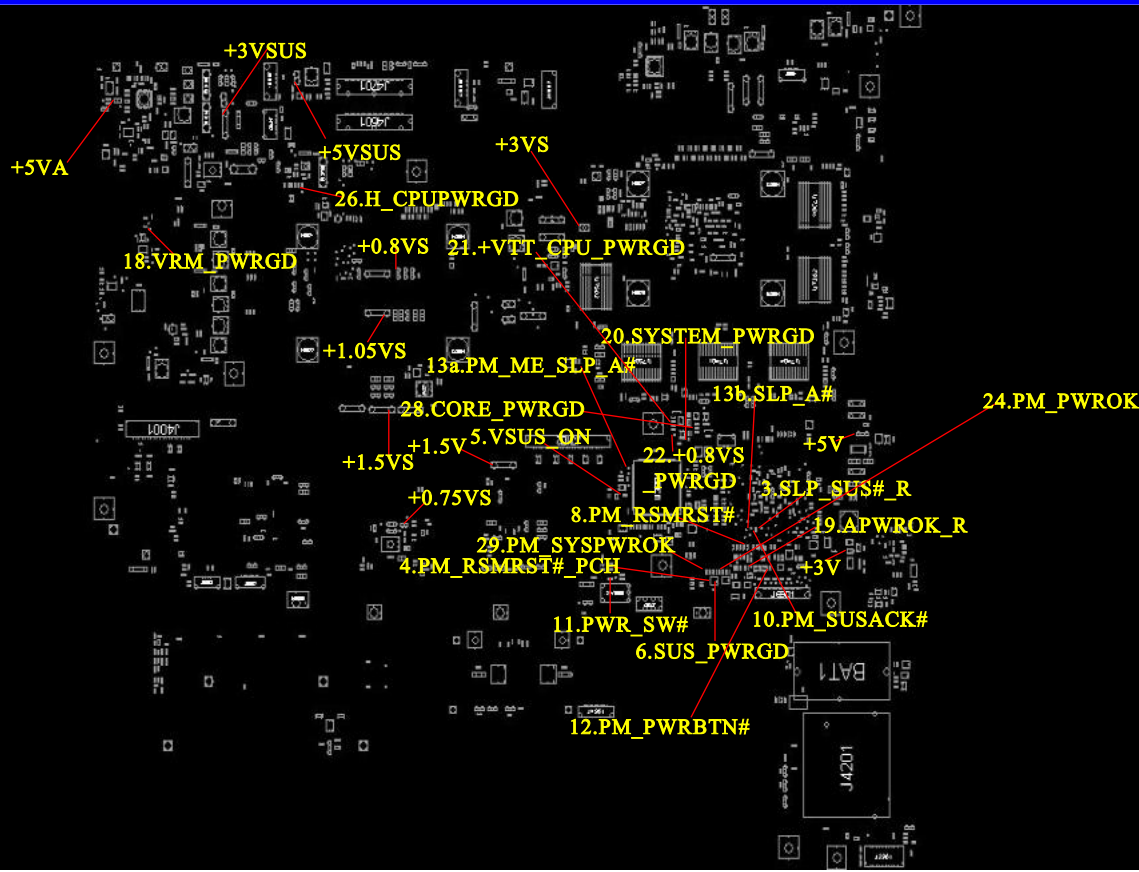
2011/5/9
Janmous_chang
CSC-GRMA

DC-IN Mode



G74SX Repair Guide(TOP)

2011/5/9
Janmous_chang
CSC-GRMA



G74SX Repair Guide(Bottom)

2011/5/9
Janmous_chang
CSC-GRMA

